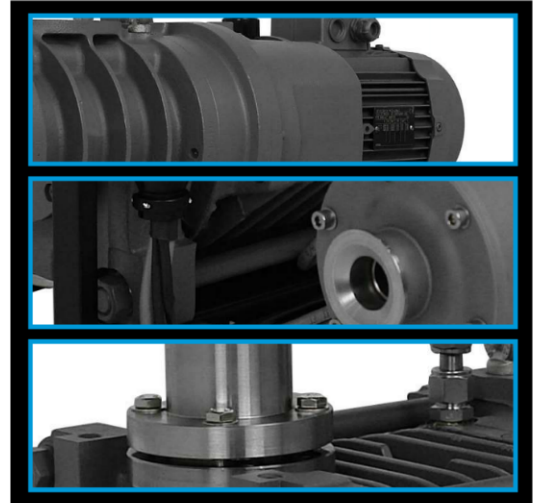


DRYSTAR 80 PUMP AND BOOSTER PACKAGE

MAXIMISE YOUR PRODUCTIVITY AND PERFORMANCE



Drystar80 is the most cost effective introduction to basic dry pumping. It is available as a stand-alone unit for 80 m³h⁻¹ repeatable pumping performance; or in a combination with the respected EH500 hydrokinetic drive mechanical booster, offering 500 m³h⁻¹ displacement for applications where increased pumping speed and/or lower vacuum levels are required. Depending upon the application the Drystar80 can be supplied with mineral oil or PFPE lubrication.



Features and Benefits

- Specifically designed for demanding industrial applications.
- Industry proven, tried and tested.
- Consistent and repeatable performance.
- High and repeatable product quality.
- No oil changes and waste oil disposal.
- No disposal cost, environmentally friendly.

Applications

R&D/others

- Backing of turbomolecular pumps.
- House/central vacuum.

Drying

- Freeze drying.
- Refrigeration/air conditioning drying.
- Transformer drying.
- Automotive drying/filling.
- Transformer vapour phase drying.
- Bush filling.

Coating

- Load lock pump down.
- Plasma deposition.
- Plasma cleaning/sterilising.
- Reflective/decorative coating.
- Optical/ophthalmic coating.
- Roll/web coating.
- Hard coating/CVD.
- Surface activation.

Heat Treatment

- Tempering/annealing.
- Oil or gas quenching.

Metallurgy.

- EB welding/vacuum brazing.
- Plasma nitriding.
- LPN (nitriding) and nitrocarburising.
- LPC with acetylene.
- Plasma beam welding.
- MIM/vacuum sintering.
- PIC (investment casting).

Performance Curves

Drystar80/EH500 Booster Pump and Booster Package

Drystar 80/EH500

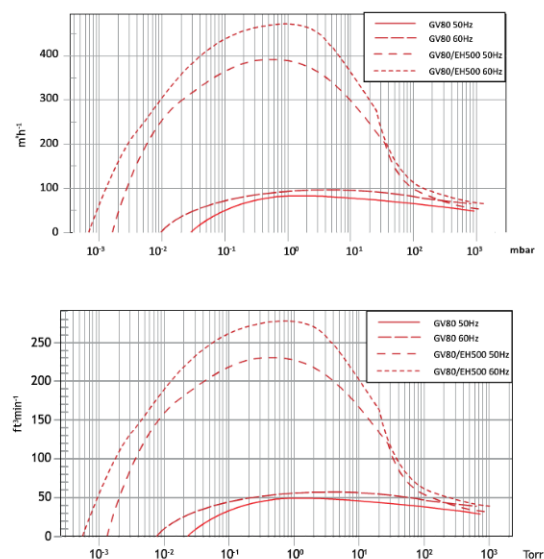


Peak pumping speed	
50 Hz	80/390 m ³ h ⁻¹
	47/230 cfm
60 Hz	94/471 m ³ h ⁻¹
	56/277 cfm
Ultimate Pressure	
mbar	< 3 x 10 ⁻¹
Torr	< 2 10 ⁻²

Ordering information

Product description	Order no:
Drystar80 SSP 380-415 V 50 Hz	NR8030000
Drystar80 SSP 230-460 V 60 Hz	NR8031000
Drystar80 PFPE SSP 380-415 V 50 Hz	NR8035000
Drystar80 PFPE SSP 230-460 V 60 Hz	NR8036000
Drystar80/EH500 SSP 380-415 V 50 Hz	NR041000
Drystar80/EH500 SSP 230-460 V 60 Hz	NR042000
Drystar80/EH500 PFPE SSP 380-415 V 50 Hz	NR046000
Drystar80/EH500 PFPE SSP 230-460 V 60 Hz	NR047000

Drystar 80 Performance Curve

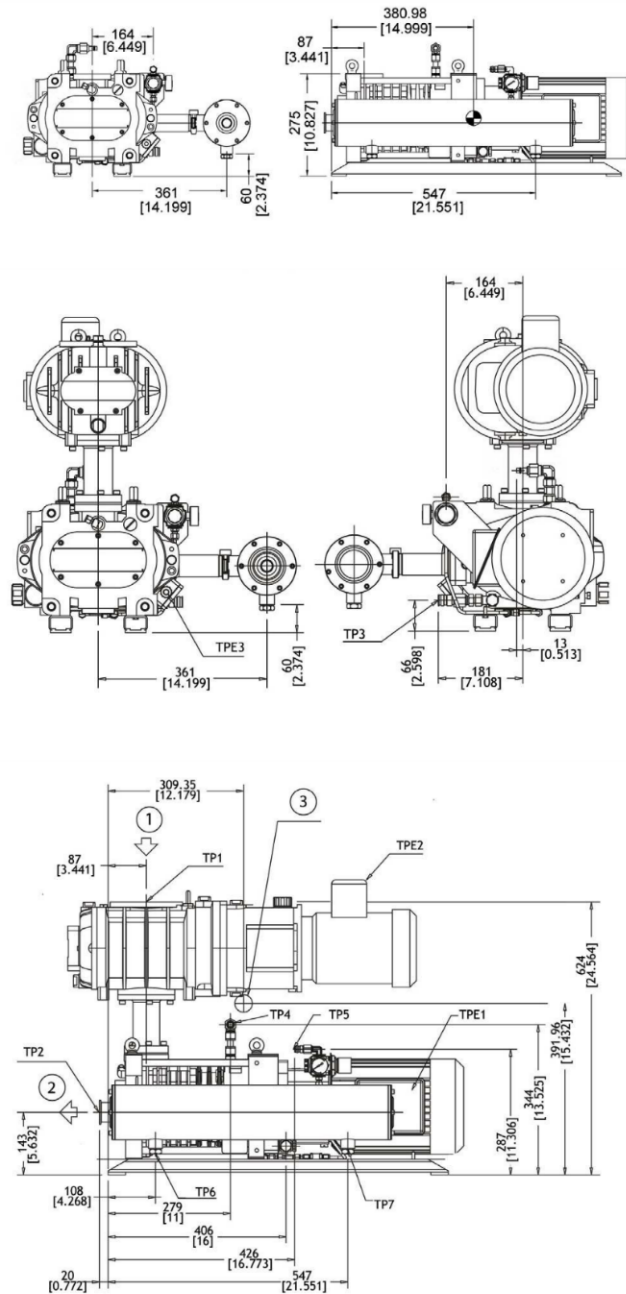


Technical Data

	Units	Drystar80	Drystar80/EH500
Peak pumping speed 50 Hz	m ³ h ⁻¹ /cfm	80/47	390/230
Peak pumping speed 60 Hz	m ³ h ⁻¹ /cfm	94/56	471/277
Ultimate pressure	mbar/Torr	3 x 10 ⁻² /2 x 10 ⁻²	3 x 10 ⁻³ /2 x 10 ⁻³
Power @ ultimate	kW	3.6	4.3
Motor Power	kW	4	6.6
Inlet connection		ISO40	ISO100
Outlet connection		NW40	NW40
Cooling water connection		½" Quick Connect	½" Quick Connect
Nitrogen connection		¼" Quick Connect	¼" Quick Connect
Water flow	lmin ⁻¹	1	1
Typical purge flow	slm	15	15
Weight	kg	145	220
Noise level	dB(A)	< 78	< 78

Dimensions

Drystar dimensions



- | | |
|---|-----------------------------|
| 1 | Process inlet |
| 2 | Process exhaust |
| 3 | Estimated centre of gravity |